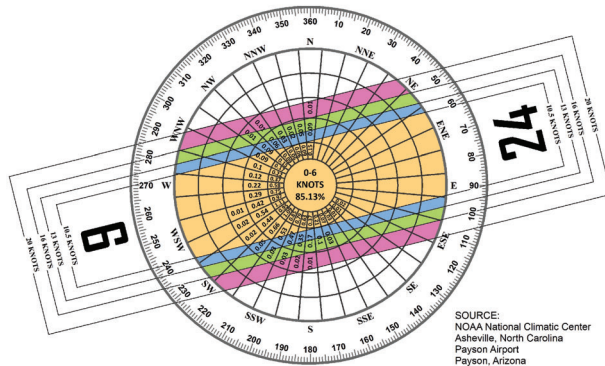




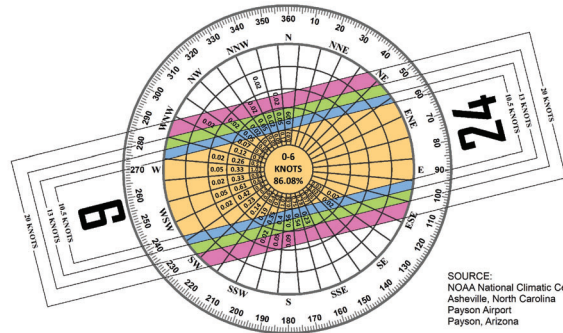
ALL WEATHER WIND COVERAGE				
Runways	10.5 Knots	13 Knots	16 Knots	20 Knots
Runway 6/24	97.75%	99.10%	99.85%	99.98%



SOURCE:  
NOAA National Climatic Center  
Asheville, North Carolina  
Payson Airport  
Payson, Arizona

OBSERVATIONS:  
206,805 All Weather Observations  
Jan. 1, 2013 - Dec. 31, 2022

IFR WIND COVERAGE				
Runways	10.5 Knots	13 Knots	16 Knots	20 Knots
Runway 6/24	97.44%	98.54%	99.65%	99.93%



SOURCE:  
NOAA National Climatic Center  
Asheville, North Carolina  
Payson Airport  
Payson, Arizona

OBSERVATIONS:  
4,705 IFR Observations  
Jan. 1, 2013 - Dec. 31, 2022

RUNWAY DATA TABLE	RUNWAY 6/24			
	EXISTING		ULTIMATE	
Runway Identification	6	24	7	25
Runway Design Code (RDC)	B-I(S)-5000		Same	
Approach Reference Code (APRC)	B-I(S)-4000		Same	
Departure Reference Code (DPRC)	B-I(S)		Same	
Runway Surface Material	Asphalt		Same	
Runway Pavement Strength By Wheel Loading (in thousands of lbs.)	40 (S); 50(D); 100(2D)		Same	
Runway Pavement Strength by PCN	N/A		Same	
Runway Surface Treatment	None		Same	
Runway Effective Gradient	0.33%		Same	
Runway Percent Wind Coverage	10.5 knots	97.75%	Same	
	13 knots	99.10%	Same	
	16 knots	99.85%	Same	
	20 knots	99.98%	Same	
Runway Dimensions (L x W)	5,504' x 75'		Same	
Runway End Coordinates	Latitude	34° 15' 18.039" N	34° 15' 31.224" N	Same
	Longitude	111° 20' 53.112" W	111° 19' 49.511" W	Same
Runway End Elevation	5,142.17' msl		5,160.41' msl	
Runway Displaced Threshold Coordinates	Latitude	N/A	N/A	Same
	Longitude	N/A	N/A	Same
Runway Displaced Threshold Distance	N/A		Same	
Runway Displaced Threshold Elevation	N/A		Same	
Runway Safety Area Dimensions (width x length beyond end) - Design Std.	120' x 240		120' x 240	
Runway Safety Area Dimensions (width x length beyond end) - Actual	120' x 240		120' x 240	
Runway Lighting Type	MIRL		Same	
Runway Protection Zone Dimensions	1,000' x 250' x 450		1,000' x 250' x 450	
Runway Marking Type	Nonprecision		Same	
14 CFR Part 77 Approach Slope	20:1		20:1	
14 CFR Part 77 Approach Type	BV		BV	
Approach Visibility Minimums	Visual		Visual	
Type of Aeronautical Survey Required for Approach	Visual		Visual	
Departure Surface (Yes or N/A)	N/A		N/A	
Runway Object Free Area Dimensions (width x length beyond end)	250' x 240'		250' x 240'	
Runway Obstacle Free Zone Dimension (width x length beyond end)	250' x 200'		250' x 200'	
13B Approach Surfaces*	Surface 3		Surface 3	
Runway Visual and Instrument Navaid	REILs, PAPI-2, RNAV (GPS)		REILs, PAPI-4, RNAV or LPV (GPS)	
Touchdown Zone Elevation (TDZE)	5,145.45' msl		5,160.41' msl	
Vertical Datum	NAVD88			
Horizontal Datum	NAD83			

\*Tables 3-2, 3-3, & 3-4 in AC 150/5300-13B

Taxiway Data Table							
Existing/Ultimate Taxiway/Taxilane Designation	Existing/Ultimate Width	Taxiway/Taxilane Safety Area Dimension	Taxiway Object Free Area	Taxilane Object Free Area	Existing/Ultimate Taxiway/Taxilane Lighting	Taxiway & Taxilane Separation <sup>1</sup>	Taxiway Edge Safety Margin (TESM)
A	35'	49'	89'	79'	MITL	44.5'	7.5'
A1	80'/35'	49'	89'	79'	MITL	44.5'	7.5'
A2	80'/35'	49'	89'	79'	MITL	44.5'	7.5'
A3	30'/35'	49'	89'	79'	MITL	44.5'	7.5'
A4	80'/35'	49'	89'	79'	MITL	44.5'	7.5'
B	35'	49'	89'	79'	MITL	44.5'	7.5'

<sup>1</sup> Objects located inside the TSA & TOFA/Distance from object to taxiway/taxilane centerline. See Table 4-1 in AC 150/5300-13B

MODIFICATIONS TO STANDARDS APPROVAL TABLE			
APPROVAL DATE	AIRSPACE CASE NUMBER	STANDARD MODIFIED	DESCRIPTION
None Required			

## AIRPORT DATA

City: Payson, Arizona	County: Gila	Owner: Town of Payson
Airport Name & ID: Payson Airport, PAN	<b>EXISTING</b>	<b>ULTIMATE</b>
Airport Reference Code (ARC)	B-I(Small)	Same
Mean Maximum Temperature of Hottest Month	92.5° (July)	
Airport Elevation (NAVD 88)	5,160.41 ft	Same
Airport Navigational Aids	Airport Beacon, RNAV (GPS), REILs, PAPI-2	Airport Beacon, RNAV or LPV (GPS), REILs, PAPI-4
Airport Reference Point (ARP) Coordinates	Latitude	34° 15' 24.611" N
	Longitude	111° 20' 21.321" W
Miscellaneous Facilities	Lighted Wind Cone, Segmented Circle, AWOS	Same
Design Critical Aircraft	Citation M2	Same
Wingspan of Design Aircraft (Feet)	47.25	Same
Approach Speed of Design Aircraft (Knots)	100	Same
Undercarriage Width of Design Aircraft (Feet)	13.00	Same
Magnetic Declination (Degrees)	9° 38' E	
Declination Date	April 2023	
Declination Source	NOAA	
NPIAS Code	Local GA	
State System Plan Role	Community GA	

RUNWAY DECLARED DISTANCE	EXISTING		ULTIMATE	
	6	24	7	25
Takeoff Run Available (TORA)	5,504	5,504	Same	Same
Takeoff Distance Available (TODA)	5,504	5,504	Same	Same
Accelerate-Stop Distance Available (ASDA)	5,504	5,504	Same	Same
Landing Distance Available (LDA)	5,504	5,504	Same	Same

Airport Navaid Ownership	
Navaid	Owner
Airport Beacon	Town of Payson
REILs	Town of Payson
PAPI-2	Town of Payson

**DRAFT**

No.	REVISIONS	DATE	BY	APPD

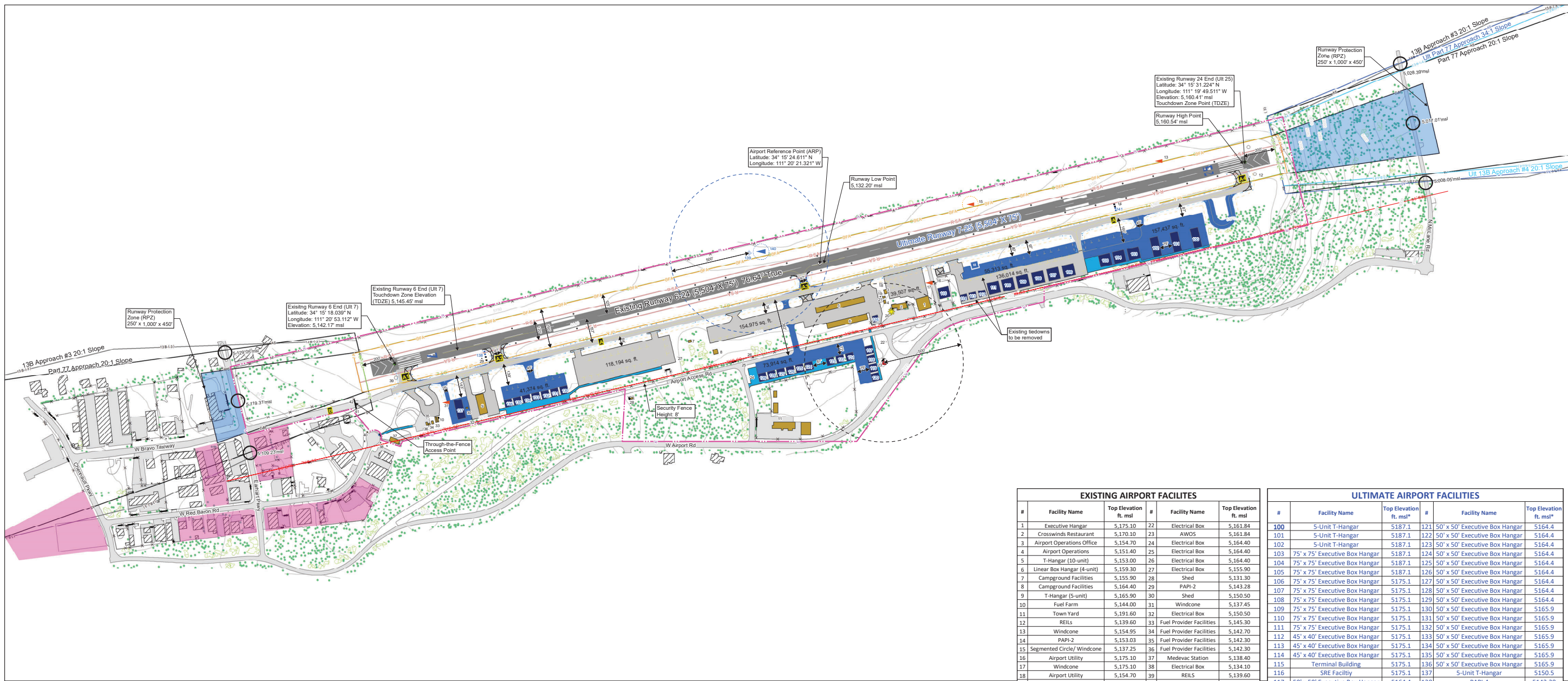
Payson Airport  
**Airport Data Sheet**  
Payson, Arizona

PLANNED BY: Chandra Burks  
DETAILED BY: Ethan Blackburn  
APPROVED BY: Matt Quick

January 2024  
SHEET 2 OF 11



PDF Created: Date: 1/16/2024, Time: 4:16:39 PM, Source: Document Path: C:\Users\edmont\Documents\Coffman Associates Inc\COFFMAN - SF\_GISPAN\_2021\ALD\_SatPAN\_ALD\_SatESRIMXD03\_PAN\_ALD.mxd

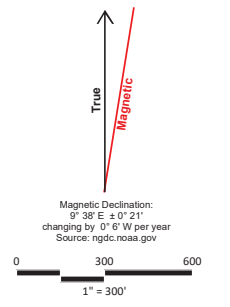


EXISTING AIRPORT FACILITIES			
#	Facility Name	Top Elevation ft. msl	Top Elevation ft. msl
1	Executive Hangar	5,175.10	5,161.84
2	Crosswinds Restaurant	5,170.10	5,161.84
3	Airport Operations Office	5,154.70	5,164.40
4	Airport Operations	5,151.40	5,164.40
5	T-Hangar (10-unit)	5,153.00	5,164.40
6	Linear Box Hangar (4-unit)	5,159.30	5,155.90
7	Campground Facilities	5,165.90	5,131.30
8	T-Hangar (5-unit)	5,144.00	5,137.45
9	Fuel Farm	5,191.60	5,150.50
10	Town Yard	5,139.60	5,145.30
11	REILS	5,154.95	5,142.70
12	Windcone	5,153.03	5,142.30
13	PAPI-2	5,175.10	5,138.40
14	Airport Utility	5,154.70	5,139.60
15	Segmented Circle/ Windcone	5,175.10	5,134.10
16	Airport Utility	5,154.70	5,139.60
17	Windcone	5,175.10	5,134.10
18	Airport Utility	5,154.70	5,139.60
19	Airport Utility	5,154.70	5,134.10
20	Airport Beacon	5,150.75	5,134.10
21	Airport Operations	5,151.60	5,134.10
22	Electrical Box	5,161.84	

ULTIMATE AIRPORT FACILITIES			
#	Facility Name	Top Elevation ft. msl*	Top Elevation ft. msl*
100	5-Unit T-Hangar	5,187.1	5,164.4
101	5-Unit T-Hangar	5,187.1	5,164.4
102	5-Unit T-Hangar	5,187.1	5,164.4
103	75' x 75' Executive Box Hangar	5,187.1	5,164.4
104	75' x 75' Executive Box Hangar	5,187.1	5,164.4
105	75' x 75' Executive Box Hangar	5,187.1	5,164.4
106	75' x 75' Executive Box Hangar	5,175.1	5,164.4
107	75' x 75' Executive Box Hangar	5,175.1	5,164.4
108	75' x 75' Executive Box Hangar	5,175.1	5,164.4
109	75' x 75' Executive Box Hangar	5,175.1	5,165.9
110	75' x 75' Executive Box Hangar	5,175.1	5,165.9
111	75' x 75' Executive Box Hangar	5,175.1	5,165.9
112	45' x 40' Executive Box Hangar	5,175.1	5,165.9
113	45' x 40' Executive Box Hangar	5,175.1	5,165.9
114	45' x 40' Executive Box Hangar	5,175.1	5,165.9
115	Terminal Building	5,175.1	5,165.9
116	SRE Facility	5,175.1	5,150.5
117	50' x 50' Executive Box Hangar	5,164.4	5,143.28
118	50' x 50' Executive Box Hangar	5,164.4	5,137.25
119	50' x 50' Executive Box Hangar	5,164.4	5,137.25
120	50' x 50' Executive Box Hangar	5,164.4	5,153.03
121	50' x 50' Executive Box Hangar	5,164.4	5,164.4
122	50' x 50' Executive Box Hangar	5,164.4	5,164.4
123	50' x 50' Executive Box Hangar	5,164.4	5,164.4
124	50' x 50' Executive Box Hangar	5,164.4	5,164.4
125	50' x 50' Executive Box Hangar	5,164.4	5,164.4
126	50' x 50' Executive Box Hangar	5,164.4	5,164.4
127	50' x 50' Executive Box Hangar	5,164.4	5,164.4
128	50' x 50' Executive Box Hangar	5,164.4	5,164.4
129	50' x 50' Executive Box Hangar	5,164.4	5,164.4
130	50' x 50' Executive Box Hangar	5,164.4	5,164.4
131	50' x 50' Executive Box Hangar	5,164.4	5,164.4
132	50' x 50' Executive Box Hangar	5,164.4	5,164.4
133	50' x 50' Executive Box Hangar	5,164.4	5,164.4
134	50' x 50' Executive Box Hangar	5,164.4	5,164.4
135	50' x 50' Executive Box Hangar	5,164.4	5,164.4
136	50' x 50' Executive Box Hangar	5,164.4	5,164.4
137	5-Unit T-Hangar	5,164.4	5,164.4
138	PAPI-4	5,164.4	5,164.4
139	AWOS	5,164.4	5,164.4
140	Segmented Circle/ Windcone	5,164.4	5,164.4
141	PAPI-4	5,164.4	5,164.4

**Legend**

- Airport Property Boundary
- Runway End Point
- Airport Reference Point (ARP)
- Ground Contour
- 35' Building Restriction Line (BRL)
- Dense Vegetation Area
- Vegetation Point
- Airport Beacon
- Runway Protection Zone (RPZ)
- Runway Safety Area (RSA)
- Runway Object Free Area (ROFA)
- Runway Obstacle Free Zone (ROFZ)
- Taxiway Object Free Area (TOFA)
- Taxiway Safety Area (TSA)
- Existing AWOS Critical Area
- Ultimate AWOS Critical Area
- Fence
- Existing Gate
- Ultimate Gate
- Existing/Ultimate Marking Line
- Existing PAPI-2
- Ultimate PAPI-4
- Existing Wind Sock
- Ultimate Wind Sock
- Existing Segmented Circle
- Ultimate Segmented Circle
- Existing AWOS-3
- Ultimate AWOS-3
- REILS
- Existing 13B Surface 3
- Existing Part 77 Approach Surface
- Ultimate 13B Surface 4
- Ultimate Part 77 Approach Surface
- Existing Easement
- Ultimate Easement
- Existing On-Airport Structure
- Off-Airport Structure
- Existing Paved Road/Parking
- Existing Unpaved Road/Parking
- Existing Taxiway
- Existing Apron
- Existing Runway
- Ultimate Structure
- Ultimate Airfield Pavement
- Ultimate Paved Road/Parking
- Pavement to be Removed



FOR APPROVAL BY:  
**Town of Payson**  
 APPROVED BY: \_\_\_\_\_ ON THE DATE OF: \_\_\_\_\_  
 Title \_\_\_\_\_

FAA APPROVAL STAMP

- General Notes**
- Mapping data from Martinez Geospatial, Survey Date: 11/14/2022
  - Required dimensions for landside facilities shown on Terminal Area Drawing (Sheet 9).

No.	REVISIONS	DATE	BY	APP'D

**Payson Airport**

**Airport Layout Plan Drawing**

**Payson, Arizona**

PLANNED BY: *Chandra Burks*

DETAILED BY: *Ethan Blackburn*

APPROVED BY: *Matt Quick*

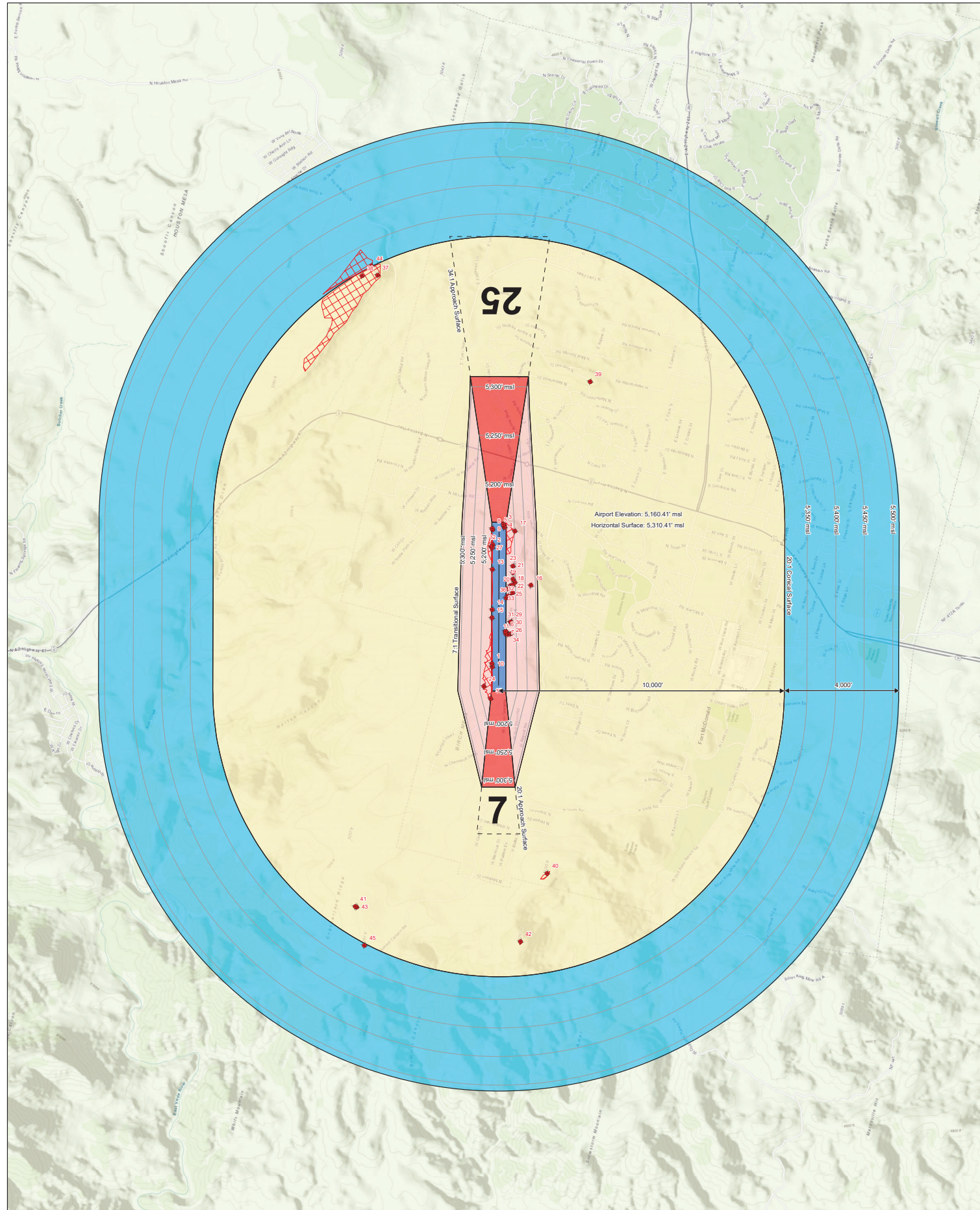
January 2024

SHEET **3** OF **11**

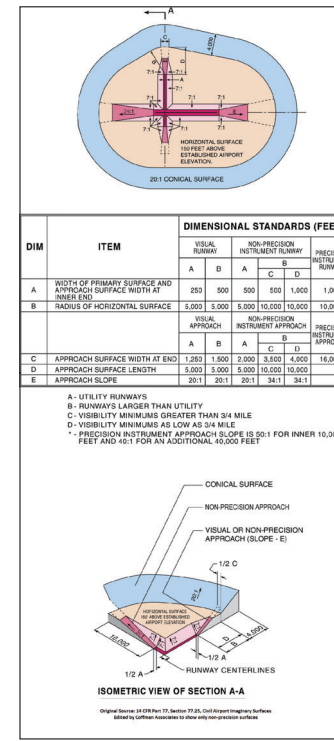
**DRAFT**



THE PREPARATION OF THESE DOCUMENTS WAS FINANCED IN PART THROUGH A PLANNING GRANT FROM THE FEDERAL AVIATION ADMINISTRATION AS PROVIDED UNDER SECTION 905 OF THE AIRPORT AND AIRWAY IMPROVEMENT ACT OF 1982, AS AMENDED. THE CONTENTS DO NOT NECESSARILY REFLECT THE OFFICIAL VIEWS OR POLICY OF THE FAA. ACCEPTANCE OF THESE DOCUMENTS BY THE FAA DOES NOT IN ANY WAY CONSTITUTE A COMMITMENT OF THE PART OF THE UNITED STATES TO PARTICIPATE IN ANY DEVELOPMENT DEPICTED HEREIN NOR DOES IT INDICATE THAT THE PROPOSED DEVELOPMENT IS ENVIRONMENTALLY ACCEPTABLE IN ACCORDANCE WITH THE APPROPRIATE PUBLIC LAWS.



Part 77 Surface Obstructions										
ID	Feature	Elevation (ft. msl.)	AGL (ft.)	Ground Elevation (ft. msl.)	FAA ID	FAA Study #	Source	Surface Obscured	Penetration Value (ft.)	Remediation
1	Tree	5,181.41	24.70	5,143.95	N/A	N/A	MTZ	Primary	37.46	Remove Tree
2	Tree	5,176.46	23.03	5,156.50	N/A	N/A	MTZ	Primary	19.96	Remove Tree
3	Tree	5,166.82	5.82	5,160.26	N/A	N/A	MTZ	Primary	6.56	Remove Tree
4	Tree	5,166.14	3.62	5,160.26	N/A	N/A	MTZ	Primary	5.88	Remove Tree
5	Tree	5,166.07	3.45	5,160.26	N/A	N/A	MTZ	Primary	5.81	Remove Tree
6	Tree	5,165.42	22.65	5,137.28	N/A	N/A	MTZ	Primary	28.14	Remove Tree
7	Tree	5,164.00	21.16	5,137.13	N/A	N/A	MTZ	Primary	26.87	Remove Tree
8	Tree	5,163.67	25.45	5,160.51	N/A	N/A	MTZ	Primary	3.16	Remove Tree
9	Tree	5,163.18	24.64	5,160.36	N/A	N/A	MTZ	Primary	2.82	Remove Tree
10	Fence	5,162.62	6.15	5,144.61	N/A	N/A	MTZ	Primary	18.01	Lower/Relocate
11	Tree	5,160.07	18.66	5,137.71	N/A	N/A	MTZ	Primary	22.36	Remove Tree
12	Fence	5,158.98	4.36	5,157.41	N/A	N/A	MTZ	Primary	1.57	Lower/Relocate
13	Tree	5,158.89	23.28	5,146.29	N/A	N/A	MTZ	Primary	12.60	Remove Tree
14	Tree	5,137.50	21.27	5,132.75	N/A	N/A	MTZ	Primary	4.75	Remove Tree
15	Tree	5,135.09	15.29	5,134.35	N/A	N/A	MTZ	Primary	0.74	Remove Tree
16	Tower	5,284.23	61.41	5,278.39	N/A	N/A	MTZ	Transitional	5.84	Add Obstruction Light
17	Tree	5,203.54	25.84	5,203.18	N/A	N/A	MTZ	Transitional	0.36	Remove Tree
18	Utility Pole	5,202.29	38.93	5,186.93	N/A	N/A	MTZ	Transitional	15.36	Add Obstruction Light
19	Utility Pole	5,201.95	38.09	5,187.81	N/A	N/A	MTZ	Transitional	14.14	Add Obstruction Light
20	Tree	5,199.58	30.63	5,198.68	N/A	N/A	MTZ	Transitional	0.90	Remove Tree
21	Utility Pole	5,198.85	38.49	5,188.42	N/A	N/A	MTZ	Transitional	10.43	Add Obstruction Light
22	Utility Pole	5,196.37	38.44	5,185.90	N/A	N/A	MTZ	Transitional	10.47	Add Obstruction Light
23	Utility Pole	5,195.25	32.18	5,189.23	N/A	N/A	MTZ	Transitional	6.02	Add Obstruction Light
24	Tree	5,193.50	33.73	5,180.84	N/A	N/A	MTZ	Transitional	12.66	Remove Tree
25	Tree	5,184.45	24.89	5,176.31	N/A	N/A	MTZ	Transitional	8.14	Remove Tree
26	Antenna	5,181.93	36.32	5,172.85	N/A	N/A	MTZ	Transitional	9.08	Add Obstruction Light
27	Tree	5,181.26	25.69	5,160.90	N/A	N/A	MTZ	Transitional	20.36	Remove Tree
28	Antenna	5,176.14	25.79	5,174.28	N/A	N/A	MTZ	Transitional	1.86	Add Obstruction Light
29	Tree	5,175.81	25.03	5,173.96	N/A	N/A	MTZ	Transitional	1.85	Remove Tree
30	Tree	5,175.48	24.58	5,174.71	N/A	N/A	MTZ	Transitional	0.77	Remove Tree
31	Tree	5,175.34	24.55	5,173.88	N/A	N/A	MTZ	Transitional	1.46	Remove Tree
32	Light Pole	5,171.75	31.65	5,162.03	N/A	N/A	MTZ	Transitional	9.72	Add Obstruction Light
33	Light Pole	5,171.10	26.19	5,159.36	N/A	N/A	MTZ	Transitional	11.74	Add Obstruction Light
34	Tree	5,167.79	25.04	5,158.97	N/A	N/A	MTZ	Transitional	8.82	Remove Tree
35	Utility on Building	5,165.42	25.44	5,160.02	N/A	N/A	MTZ	Transitional	5.40	Add Obstruction Light
36	Light Pole	5,162.07	26.02	5,152.85	N/A	N/A	MTZ	Transitional	9.22	Add Obstruction Light
37	Tree	5,385.00	32.00	5,310.41	N/A	N/A	ADIP	Horizontal	74.59	Remove Tree
38	Light Pole	5,364.00	35.00	5,310.41	N/A	N/A	ADIP	Horizontal	53.59	Add Obstruction Light
39	Tower	5,322.09	73.53	5,310.41	1006792	2011-AWP-4696-OE	MTZ	Horizontal	11.68	Determination of No Hazard - Lighted/Marked
40	Tree	5,319.02	26.74	5,310.41	N/A	N/A	MTZ	Horizontal	8.61	Remove Tree
41	Tree	5,318.00	27.00	5,310.41	N/A	N/A	ADIP	Horizontal	7.59	Remove Tree
42	Tree	5,317.13	35.45	5,310.41	N/A	N/A	MTZ	Horizontal	6.72	Remove Tree
43	Tree	5,317.00	26.00	5,310.41	N/A	N/A	ADIP	Horizontal	6.59	Remove Tree
44	Tree	5,369.00	28.00	5,311.07	N/A	N/A	ADIP	Conical	57.93	Remove Tree
45	Tree	5,320.00	22.00	5,313.83	N/A	N/A	ADIP	Conical	6.17	Remove Tree



**Legend**

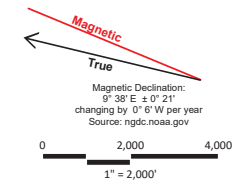
- Runway Centerline
- Part 77 Obstructions
- Obstruction Groupings
- Part 77 Surface Contours

**Part 77 Surfaces**

- Primary Surface
- Approach Surface
- Horizontal Surface
- Transitional Surface
- Conical Surface

**General Notes**

- Mapping data from Martinez Geospatial. Survey Date: 11/14/2022
- Obstructions within groupings represent tallest manmade and/or natural and/or terrain feature.
- Airport specific zoning height restrictions are established per the Town of Payson's Code of Ordinances, Section 154-02-015: Airport Overlay District, which limits the height of all construction, structures, buildings, and landscaping within the following zones: Utility runway visual approach, Utility runway non-precision instrument approach, Heliport approach, Heliport transitional, Horizontal and Conical zones (Ord. 466, Passed February 22, 1996).



**DRAFT**

No.	REVISIONS	DATE	BY	APPD


**Payson Airport**

**Airport Airspace Drawing**

Payson, Arizona

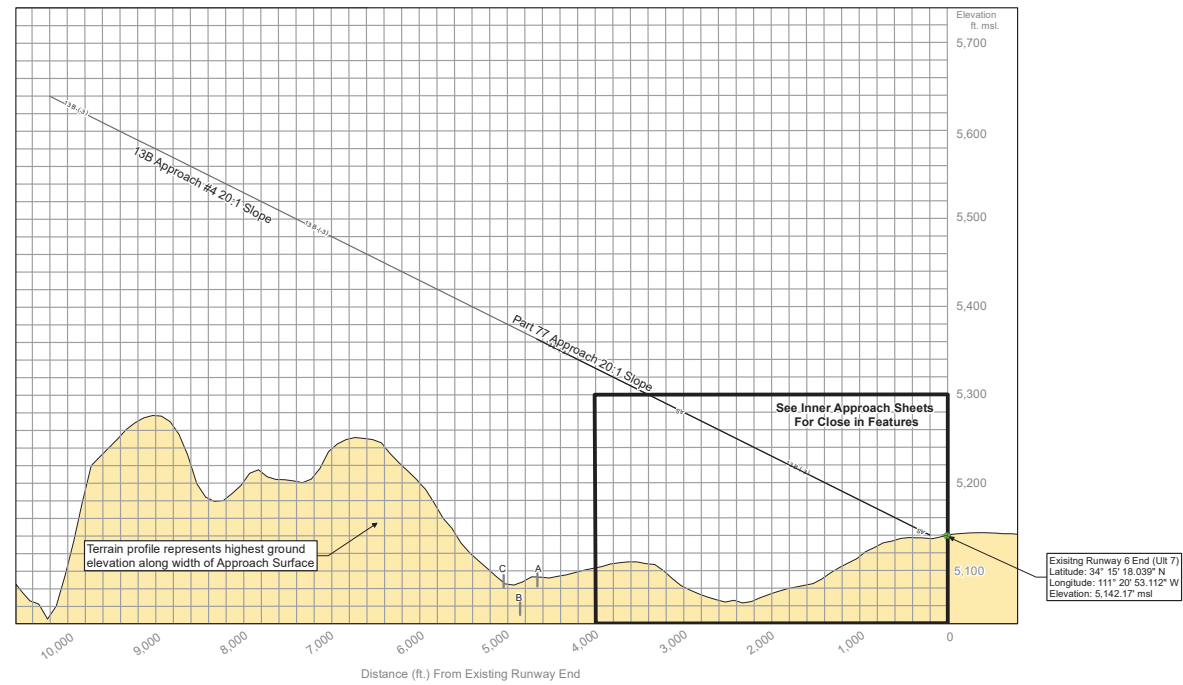
PLANNED BY: Chandra Burks  
 DETAILED BY: Ethan Blackburn  
 APPROVED BY: Matt Quick  
 January 2024

SHEET 4 OF 11



THE PREPARATION OF THESE DOCUMENTS WAS FINANCED IN PART THROUGH A PLANNING GRANT FROM THE FEDERAL AVIATION ADMINISTRATION AS PROVIDED UNDER SECTION 505 OF THE AIRPORT AND AIRWAY IMPROVEMENT ACT OF 1982, AS AMENDED. THE CONTENTS DO NOT NECESSARILY REFLECT THE OFFICIAL VIEWS OR POLICY OF THE FAA. ACCEPTANCE OF THESE DOCUMENTS BY THE FAA DOES NOT IN ANY WAY CONSTITUTE A COMMITMENT OF THE PART OF THE UNITED STATES TO PARTICIPATE IN ANY DEVELOPMENT DEPICTED HEREIN NOR DOES IT INDICATE THAT THE PROPOSED DEVELOPMENT IS ENVIRONMENTALLY ACCEPTABLE IN ACCORDANCE WITH THE APPROPRIATE PUBLIC LAWS

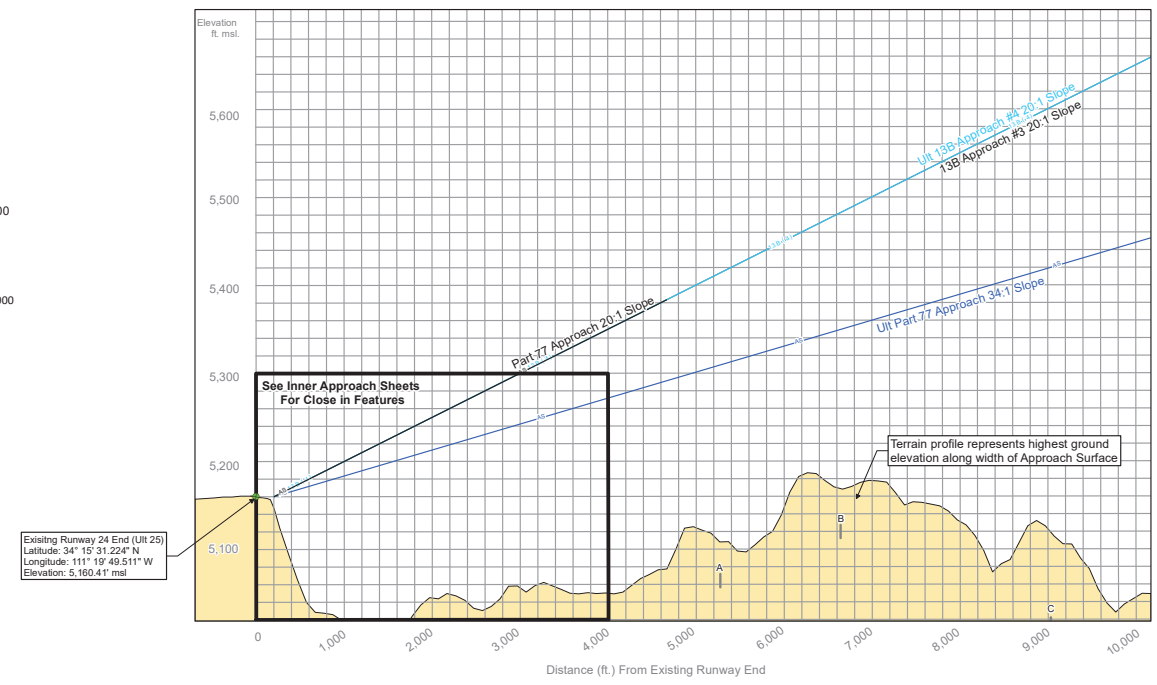
### Runway 7 Outer-Approach Profile



Runway 7 Outer Approach Road Traverse Points					
ID	Feature	Ground Elevation (ft. msl.)	Adjustment Height (ft.)	Top Elevation (ft. msl.)	Clearance (ft.)
A	Whitehouse Drive	5,082.84	15.00	5,097.84	268.15
B	Whitehouse Drive	5,050.76	15.00	5,065.76	310.26
C	Bulla Drive	5,081.58	15.00	5,096.58	288.39
D	N Tyler Parkway	4,976.88	15.00	4,991.88	436.25

Runway 7 Outer Approach Obstructions										
ID	Feature	Elevation (ft. msl.)	AGL (ft.)	Ground Elevation (ft. msl.)	FAA ID	FAA Study #	Source	Surface Obstructed	Penetration Value (ft.)	Remediation
No Obstructions										

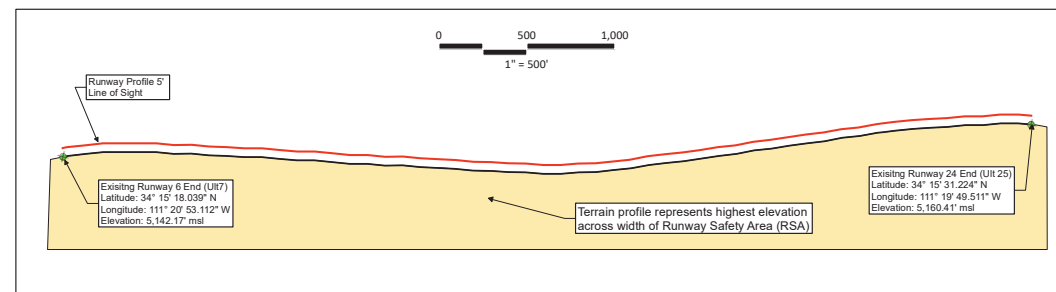
### Runway 25 Outer-Approach Profile



Runway 25 Outer Approach Road Traverse Points					
ID	Feature	Ground Elevation (ft. msl.)	Adjustment Height (ft.)	Top Elevation (ft. msl.)	Clearance (ft.)
A	E Rancho Road	5,057.84	15.00	5,072.84	-242.71
B	N Tyler Parkway	5,112.19	15.00	5,127.19	-223.38
C	N Tyler Parkway	5,007.55	15.00	5,022.55	-397.98
D	N Tyler Parkway	4,976.88	15.00	4,991.88	-436.25

Runway 25 Outer Approach Obstructions										
ID	Feature	Elevation (ft. msl.)	AGL (ft.)	Ground Elevation (ft. msl.)	FAA ID	FAA Study #	Source	Surface Obstructed	Penetration Value (ft.)	Remediation
No Obstructions										

### Runway 7/25 Profile



Legend	
—	Airport Property Line
◆	Runway End Point
—	Runway Profile Line
---	Existing 13B Surface 3
---	Existing Part 77 Approach Surface
---	Ultimate 13B Surface 4
---	Ultimate Part 77 Approach Surface
—	Runway profile 5' Line of Sight
—	Profile View Road Markings
■	Terrain Profile

#### General Notes

1. Mapping data from Martinez Geospatial. Survey Date: 11/14/2022

**DRAFT**

Payson Airport  
Approach Profile Drawing

Payson, Arizona

No.	REVISIONS	DATE	BY	APPD

PLANNED BY: Chandra Burks  
DETAILED BY: Ethan Blackburn  
APPROVED BY: Matt Quick

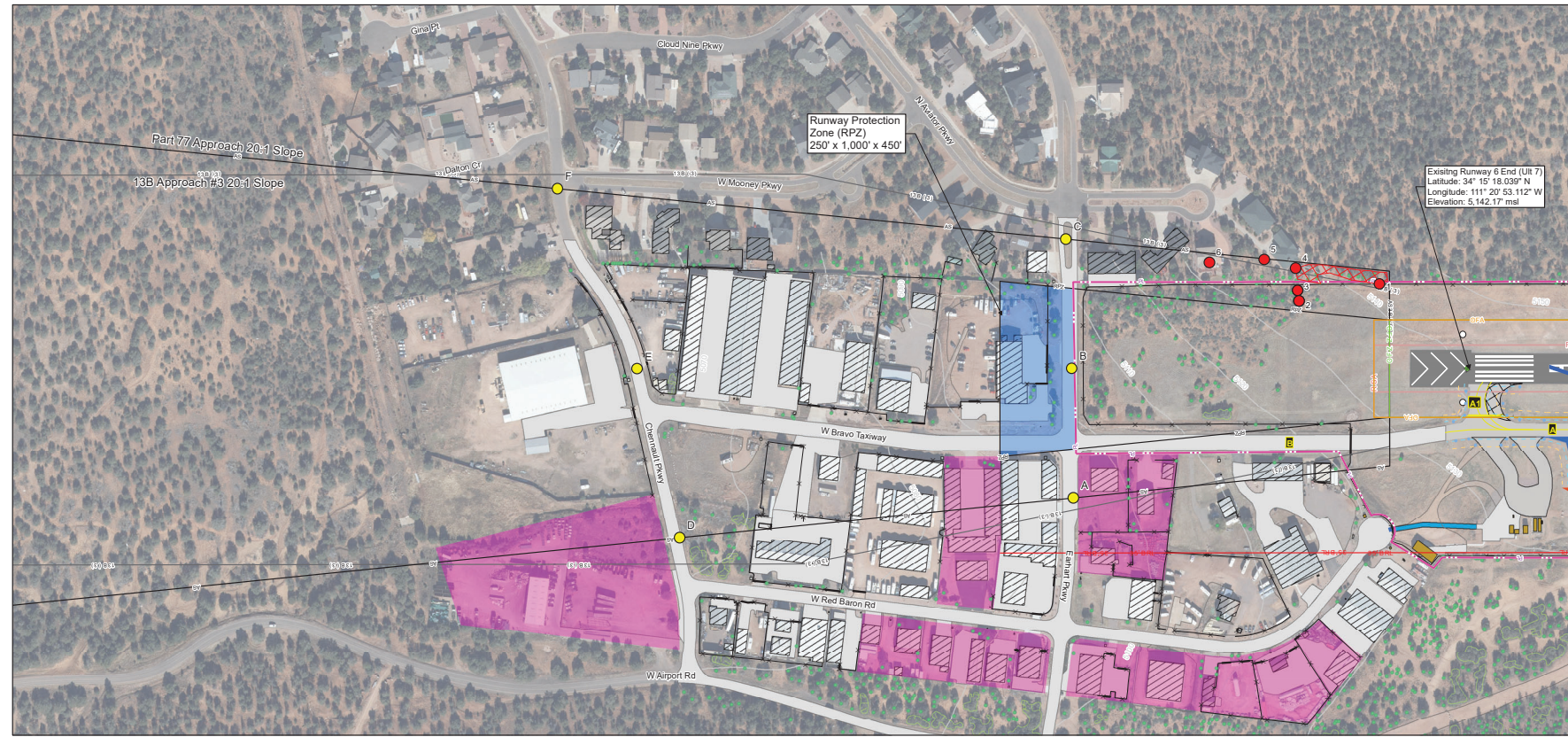
THE PREPARATION OF THESE DOCUMENTS WAS FINANCED IN PART THROUGH A PLANNING GRANT FROM THE FEDERAL AVIATION ADMINISTRATION AS PROVIDED UNDER SECTION 505 OF THE AIRPORT AND AIRWAY IMPROVEMENT ACT OF 1982, AS AMENDED. THE CONTENTS DO NOT NECESSARILY REFLECT THE OFFICIAL VIEWS OR POLICY OF THE FAA. ACCEPTANCE OF THESE DOCUMENTS BY THE FAA DOES NOT IN ANY WAY CONSTITUTE A COMMITMENT OF THE PART OF THE UNITED STATES TO PARTICIPATE IN ANY DEVELOPMENT DEPICTED HEREIN NOR DOES IT INDICATE THAT THE PROPOSED DEVELOPMENT IS ENVIRONMENTALLY ACCEPTABLE IN ACCORDANCE WITH THE APPROPRIATE PUBLIC LAWS

January 2024

SHEET 5 OF 11

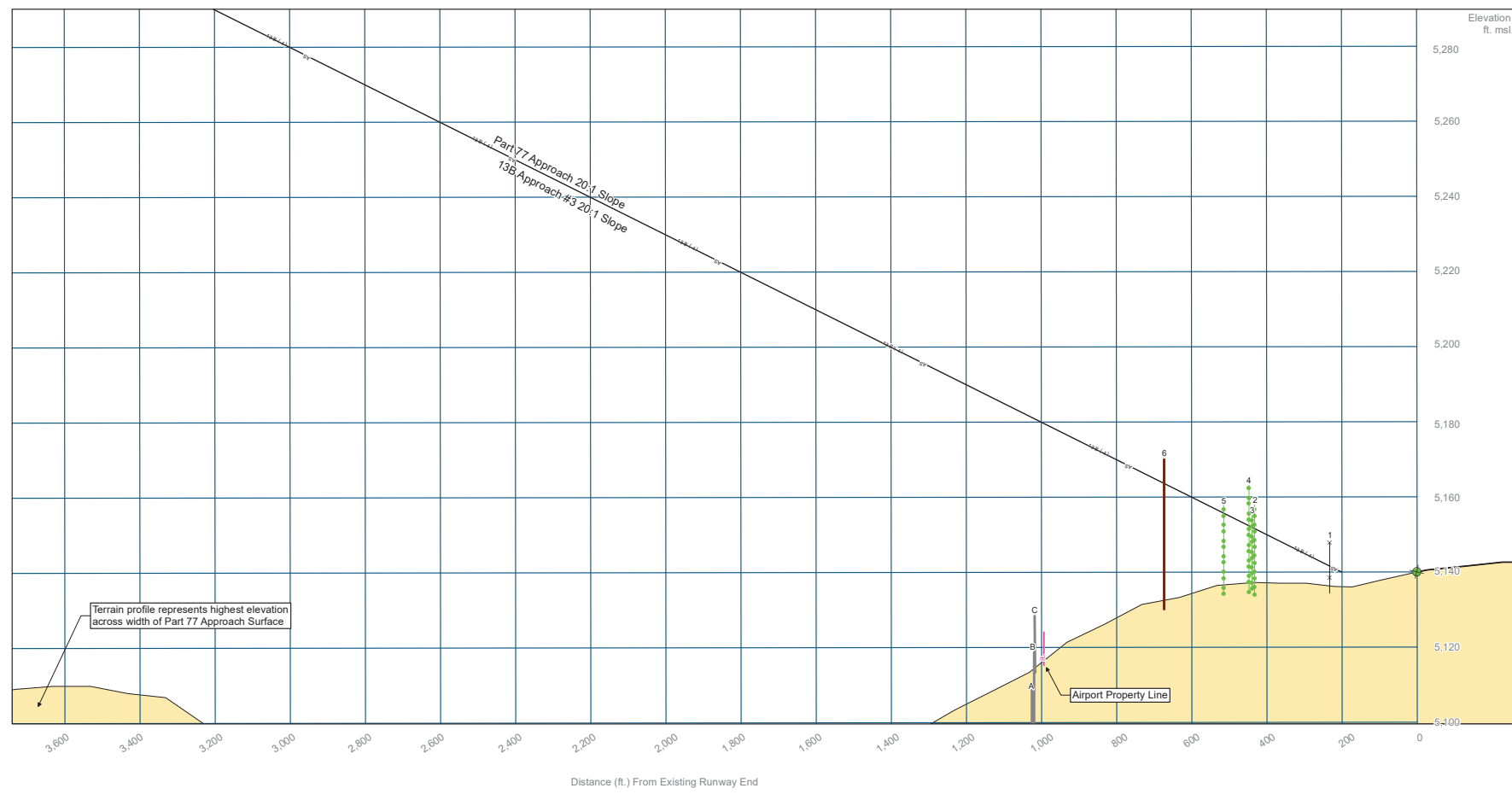


PDF Created: Date: 1/16/2024, Time: 2:29:25 PM, Source Document Path: C:\Users\EthanBlackburn\Coffman - sp\_GIS\SPAN\_2021\ALP\_Series\ESR\IMXD\06\_PAN\_6\_Inner\_Approach.mxd



ID	Feature	Elevation (ft. msl.)	AGL (ft.)	Ground Elevation (ft. msl.)	FAA ID	FAA Study #	Source	Surface Obstructed	Penetration Value (ft.)	Remediation
1	Fence	5,148.66	6.38	5,143.42	N/A	N/A	MTZ	Part 77 Approach	5.24	Remove Tree
2	Tree	5,158.17	23.09	5,153.76	N/A	N/A	MTZ	13B Approach Part 77 Approach	4.41	Remove Tree
3	Tree	5,155.33	19.26	5,153.94	N/A	N/A	MTZ	13B Approach Part 77 Approach	1.39	Remove Tree
4	Tree	5,163.33	24.50	5,154.19	N/A	N/A	MTZ	Part 77 Approach	9.14	Remove Tree
5	Tree	5,158.46	20.86	5,158.24	N/A	N/A	MTZ	Part 77 Approach	0.22	Remove Tree
6	Utility Pole	5,170.48	35.52	5,165.25	N/A	N/A	MTZ	13B Approach Part 77 Approach	5.23	Add Obstruction Light

ID	Feature	Ground Elevation (ft. msl.)	Adjustment Height (ft.)	Top Elevation (ft. msl.)	Clearance (ft.)
A	N Earhart Parkway	5,094.23	15.00	5,109.23	73.53
B	N Earhart Parkway	5,104.31	15.00	5,119.31	63.64
C	N Earhart Parkway	5,114.05	15.00	5,129.05	54.63
D	Chenault Parkway	5,066.38	15.00	5,081.38	151.92
E	Chenault Parkway	5,065.52	15.00	5,080.52	158.21
F	Chenault Parkway	5,063.48	15.00	5,078.48	170.45



**Legend**

- Airport Property Boundary
- Runway End Point
- Ground Contour
- 35' Building Restriction Line (BRL)
- Dense Vegetation Area
- Vegetation Point
- Runway Protection Zone (RPZ)
- Runway Safety Area (RSA)
- Runway Object Free Area (ROFA)
- Runway Obstacle Free Zone (ROFZ)
- Taxiway Object Free Area (TOFA)
- Taxiway Safety Area (TSA)
- Fence
- Existing Gate
- Existing/Ulimate Marking Line
- Existing Wind Sock
- REILs
- Existing 13B Surface 3
- Existing Part 77 Approach Surface
- Obstruction Groupings
- Road Traverse Points
- Obstruction Points
- Existing Easement
- Ultimate Easement
- Existing On-Airport Structure
- Off-Airport Structure
- Existing Paved Road/Parking
- Existing Unpaved Road/Parking
- Existing Taxiway
- Existing Apron
- Existing Runway
- Ultimate Airfield Pavement
- Ultimate Paved Road/Parking
- Profile View Road Markings
- Profile View Fence Marking
- Profile View Tree Marking
- Profile View Utility Marking
- Terrain Profile

Magnetic Declination:  
9° 38' E ± 0' 21"  
changing by 0' 6" W per year  
Source: ngdc.noaa.gov

Vertical Scale  
0 20 40  
1" = 20'

Horizontal Scale  
0 200 400  
1" = 200'

**General Notes**

1. Mapping data from Martinez Geospatial. Survey Date: 11/14/2022
2. Obstructions within groupings represent tallest manmade and/or natural and/or terrain feature.

No.	REVISIONS	DATE	BY	APPD

**DRAFT**

**Payson Airport**  
**Inner Portion of the Approach**  
**Surface Drawing - Runway 6**

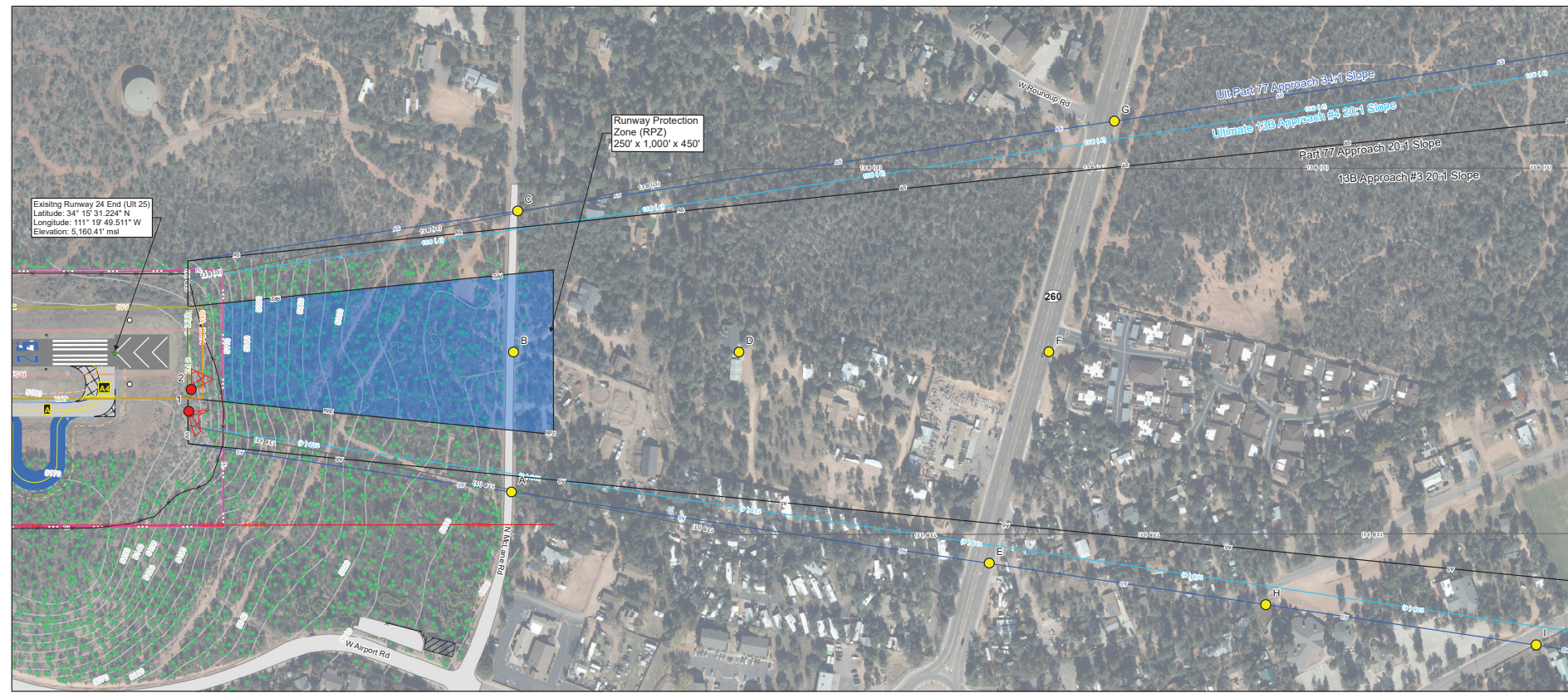
Payson, Arizona

PLANNED BY: Chandra Burks  
 DETAILED BY: Ethan Blackburn  
 APPROVED BY: Matt Quick

January 2024 SHEET 6 OF 11

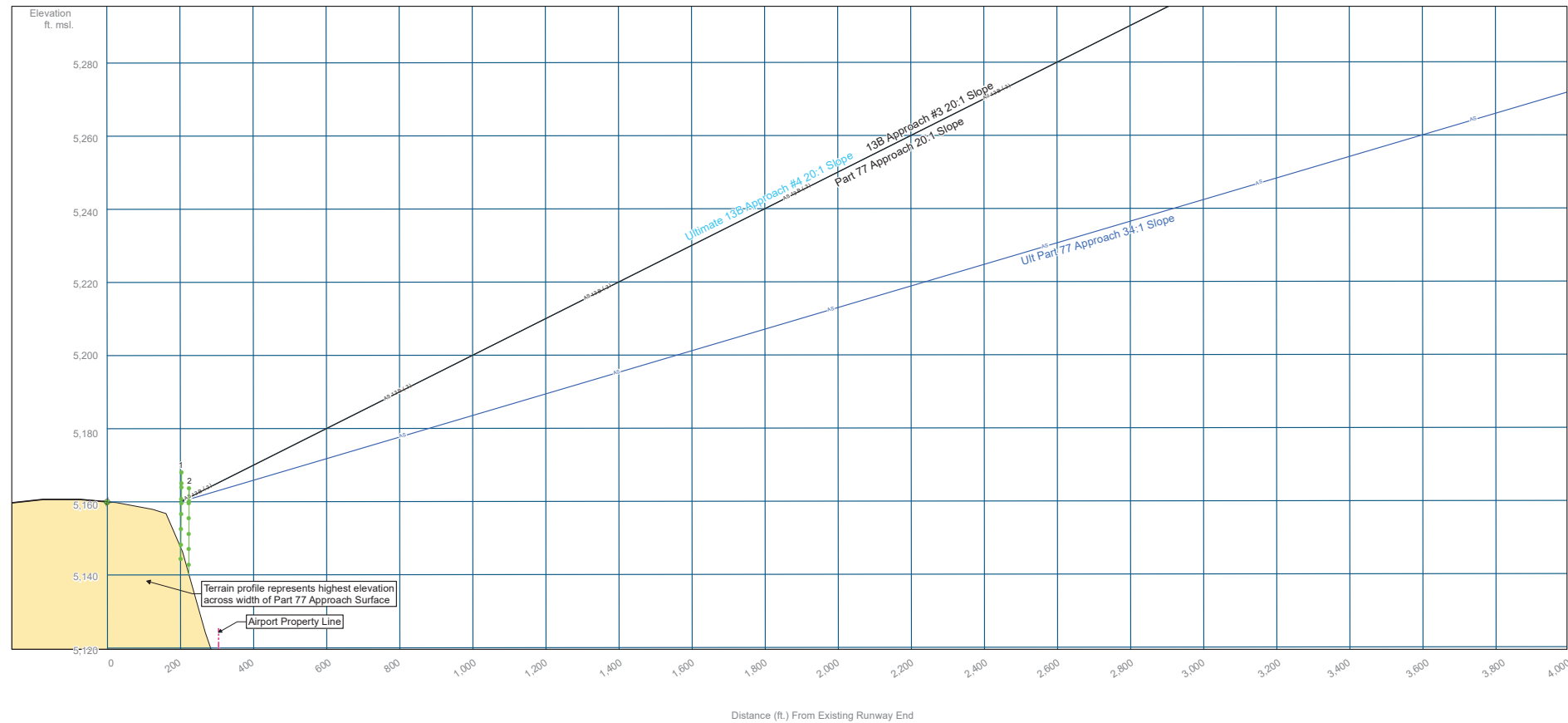
THE PREPARATION OF THESE DOCUMENTS WAS FINANCED IN PART THROUGH A PLANNING GRANT FROM THE FEDERAL AVIATION ADMINISTRATION AS PROVIDED UNDER SECTION 503 OF THE AIRPORT AND AIRWAY IMPROVEMENT ACT OF 1982, AS AMENDED. THE CONTENTS DO NOT NECESSARILY REFLECT THE OFFICIAL VIEWS OR POLICY OF THE FAA. ACCEPTANCE OF THESE DOCUMENTS BY THE FAA DOES NOT IN ANY WAY CONSTITUTE A COMMITMENT OF THE PART OF THE UNITED STATES TO PARTICIPATE IN ANY DEVELOPMENT DEPICED HEREIN NOR DOES IT INDICATE THAT THE PROPOSED DEVELOPMENT IS ENVIRONMENTALLY ACCEPTABLE IN ACCORDANCE WITH THE APPROPRIATE PUBLIC LAWS

PDF Created: Date: 1/16/2024, Time: 2:27:26 PM, Source Document Path: C:\Users\EthanBlackburn\Coffman - sp\_GIS\PAN\_2021\ALP\_Sep\PAN\_ALP\_Series\RM\MDA07\_PAN\_24\_Inner\_Approach.mxd



ID	Feature	Elevation (ft. msl.)	AGL (ft.)	Ground Elevation (ft. msl.)	FAA ID	FAA Study #	Source	Surface Obstructed	Penetration Value (ft.)	Remediation
1	Tree	5,169.25	8.90	5,160.48	N/A	N/A	MTZ	13B Approach Part 77 Approach	8.73	Remove tree
								Ultimate 13B Approach	8.77	
								Ultimate Part 77 Approach		
2	Tree	5,164.38	6.79	5,160.67	N/A	N/A	MTZ	13B Approach Part 77 Approach	3.52	Remove tree
								Ultimate 13B Approach	3.71	
								Ultimate Part 77 Approach		

ID	Feature	Ground Elevation (ft. msl.)	Adjustment Height (ft.)	Top Elevation (ft. msl.)	Clearance (ft.)
A	N McLane Road	4,993.05	15.00	5,008.05	178.41
B	N McLane Road	5,002.01	15.00	5,017.01	169.61
C	N McLane Road	5,013.39	15.00	5,028.39	158.58
D	E Glade Lane	4,997.67	15.00	5,012.67	192.11
E	N Beeline Highway	4,999.65	15.00	5,014.65	210.25
F	N Beeline Highway	5,021.27	15.00	5,036.27	193.46
G	N Beeline Highway	5,030.92	15.00	5,045.92	189.08
H	Airline Boulevard	5,004.56	15.00	5,019.56	227.59
I	E Rancho Road	5,024.30	15.00	5,039.30	229.61



**Legend**

- Airport Property Boundary
- Runway End Point
- Ground Contour
- 35' Building Restriction Line (BRL)
- Dense Vegetation Area
- Vegetation Point
- Existing Fence
- Existing/Ultimate Marking Line
- REILs
- Existing 13B Surface 3
- Existing Part 77 Approach Surface
- Ultimate 13B Surface 4
- Ultimate Part 77 Approach Surface
- Runway Protection Zone (RPZ)
- Runway Safety Area (RSA)
- Runway Object Free Area (ROFA)
- Runway Obstacle Free Zone (ROFZ)
- Taxiway Object Free Area (TOFA)
- Taxiway Safety Area (TSA)
- Obstruction Groupings
- Road Traverse Points
- Obstruction Points
- Ultimate Easement
- Off-Airport Structure
- Existing Paved Road/Parking
- Existing Taxiway
- Existing Runway
- Ultimate Airfield Pavement
- Profile View Tree Marking
- Terrain Profile

Magnetic Declination:  
9° 38' E ± 0' 21"  
changing by 0" 6' W per year  
Source: ngdc.noaa.gov

Vertical Scale  
0 20 40  
1" = 20'

Horizontal Scale  
0 200 400  
1" = 200'

True  
Magnetic

- General Notes**
- Mapping data from Martinez Geospatial. Survey Date: 11/14/2022
  - Obstructions within groupings represent tallest manmade and/or natural and/or terrain feature.

No.	REVISIONS	DATE	BY	APPD

THE PREPARATION OF THESE DOCUMENTS WAS FINANCED IN PART THROUGH A PLANNING GRANT FROM THE FEDERAL AVIATION ADMINISTRATION AS PROVIDED UNDER SECTION 503 OF THE AIRPORT AND AIRWAY IMPROVEMENT ACT OF 1982, AS AMENDED. THE CONTENTS DO NOT NECESSARILY REFLECT THE OFFICIAL VIEWS OR POLICY OF THE FAA. ACCEPTANCE OF THESE DOCUMENTS BY THE FAA DOES NOT IN ANY WAY CONSTITUTE A COMMITMENT OF THE PART OF THE UNITED STATES TO PARTICIPATE IN ANY DEVELOPMENT DEPICED HEREIN NOR DOES IT INDICATE THAT THE PROPOSED DEVELOPMENT IS ENVIRONMENTALLY ACCEPTABLE IN ACCORDANCE WITH THE APPROPRIATE PUBLIC LAWS

**DRAFT**

**Payson Airport**  
**Inner Portion of the Approach Surface Drawing - Runway 24**  
**Payson, Arizona**

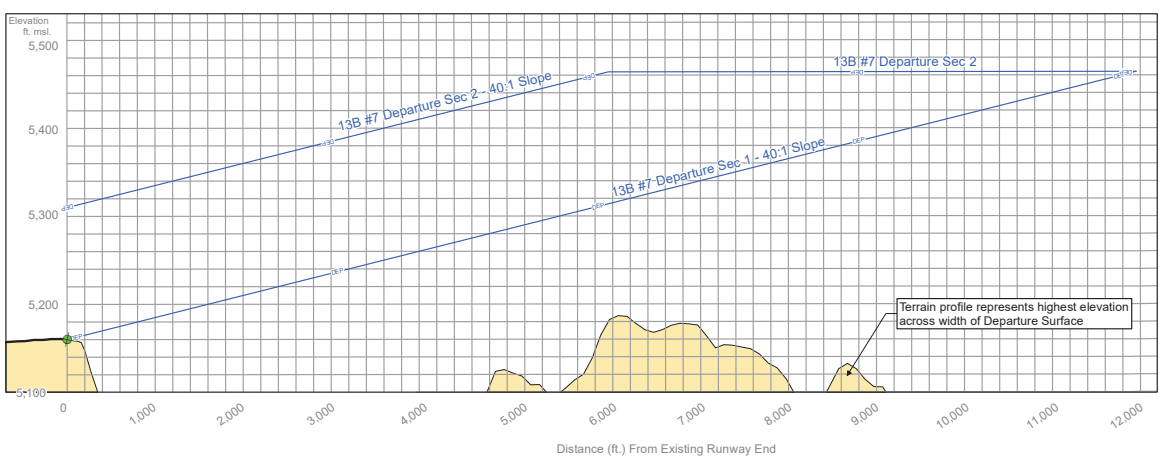
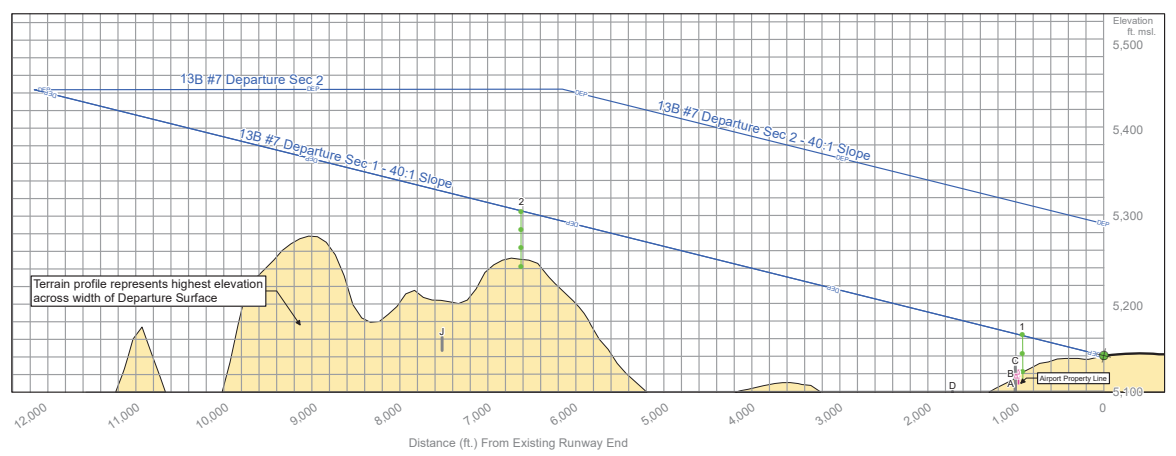
PLANNED BY: Chandra Burks  
 DETAILED BY: Ethan Blackburn  
 APPROVED BY: Matt Quick

January 2024      SHEET 7 OF 11

PDF Created: Date: 1/16/2024 Time: 2:32:50 PM Source Document Path: C:\Users\EthanBlackburn\Coffman - sp GIS\PAN 2021\ALP\_Surfaces\Surfaces.mxd



- Legend**
- Airport Property Boundary
  - Runway End Point
  - Ground Contour
  - Dense Vegetation Area
  - Vegetation Point
  - Fence
  - Existing Gate
  - Ultimate Gate
  - Existing/Ultimate Marking Line
  - Existing PAPI-2
  - Ultimate PAPI-4
  - ▲ Existing Wind Sock
  - REILs
  - Ultimate Departure Surface
  - Existing Easement
  - Ultimate Easement
  - Existing Taxiway
  - Existing Apron
  - Existing Runway
  - Existing Paved Road/Parking
  - Ultimate Airfield Pavement
  - Ultimate Paved Road/Parking
  - Obstruction Grouping
  - Road Traverse Points
  - Obstruction Point
  - Profile View Tree Markings
  - Profile View Road Markings
  - Terrain Profile

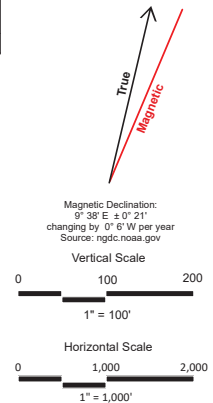


Runway 7 End Departure Obstructions										
ID	Feature	Elevation (ft. msl.)	AGL (ft.)	Ground Elevation (ft. msl.)	FAA ID	FAA Study #	Source	Surface Obstructed	Penetration Value (ft.)	Remediation
1	Tree	5164.057	44.068147	5163.35	N/A	N/A	MTZ	Departure	0.71	Remove Tree
2	Tree	5319.015	26.743879	5306.65	N/A	N/A	MTZ	Departure	12.37	Remove Tree

Runway 7 End Departure Road Traverse Points					
ID	Feature	Ground Elevation (ft. msl.)	Adjustment Height (ft.)	Top Elevation (ft. msl.)	Clearance (ft.)
A	N Earhart Parkway	5,094.23	15.00	5,109.23	58.23
B	N Earhart Parkway	5,104.31	15.00	5,119.31	48.25
C	N Earhart Parkway	5,112.89	15.00	5,127.89	40.01
D	W Mooney Parkway	5,086.36	15.00	5,101.36	82.22
E	Chenault Parkway	5,070.98	15.00	5,085.98	105.98
F	Chenault Parkway	5,065.52	15.00	5,080.52	114.93
G	Chenault Parkway	5,064.71	15.00	5,079.71	121.11
H	W Airline Road	5,057.83	15.00	5,072.83	137.50
I	Whitehouse Drive	5,050.76	15.00	5,065.76	198.34
J	Graff Road Trailhead	5,151.46	10.00	5,161.46	168.69

Runway 25 End Departure Obstructions										
ID	Feature	Elevation (ft. msl.)	AGL (ft.)	Ground Elevation (ft. msl.)	FAA ID	FAA Study #	Source	Surface Obstructed	Penetration Value (ft.)	Remediation
No Obstructions										

Runway 25 End Departure Road Traverse Points					
ID	Feature	Ground Elevation (ft. msl.)	Adjustment Height (ft.)	Top Elevation (ft. msl.)	Clearance (ft.)
A	N McLane Road	4,994.26	15.00	5,009.26	178.30
B	N McLane Road	5,002.01	15.00	5,017.01	170.68
C	N McLane Road	5,012.75	15.00	5,027.75	160.16
D	E Glade Lane	4,997.67	15.00	5,012.67	190.46
E	N Beeline Highway	4,996.68	15.00	5,011.68	207.89
F	N Beeline Highway	5,021.27	15.00	5,036.27	188.06
G	N Beeline Highway	5,031.85	15.00	5,046.85	183.02
H	Airline Boulevard	5,003.62	15.00	5,018.62	213.55
I	E Rancho Road	5,015.52	15.00	5,030.52	218.35
J	N Tyler Parkway	5,083.81	15.00	5,098.81	189.59
K	E Rancho Road	5,057.84	15.00	5,072.84	224.44
L	N Tyler Parkway	4,985.70	15.00	5,000.70	385.04
M	N Tyler Parkway	5,007.55	15.00	5,022.55	363.96



Vertical Scale  
0 100 200  
1" = 100'

Horizontal Scale  
0 1,000 2,000  
1" = 1,000'

**DRAFT**

No.	REVISIONS	DATE	BY	APP'D

**Payson Airport**

**Departure Surface Drawing**

Payson, Arizona

PLANNED BY: Chandra Burks  
 DETAILED BY: Ethan Blackburn  
 APPROVED BY: Matt Quick

**General Notes**

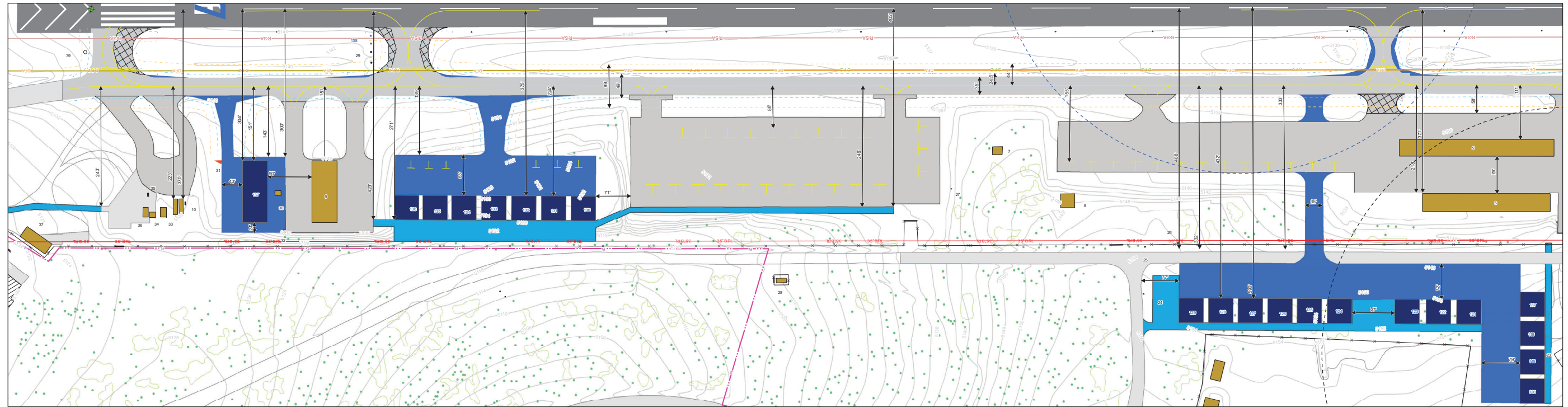
- Mapping data from Martinez Geospatial. Survey Date: 11/14/2022
- Obstructions within groupings represent tallest manmade and/or natural and/or terrain feature.
- Road point clearances depicted along extended centerline and outer edge of section 1 of departure surface.

THE PREPARATION OF THESE DOCUMENTS WAS FINANCED IN PART THROUGH A PLANNING GRANT FROM THE FEDERAL AVIATION ADMINISTRATION AS PROVIDED UNDER SECTION 505 OF THE AIRPORT AND AIRWAY IMPROVEMENT ACT OF 1982, AS AMENDED. THE CONTENTS DO NOT NECESSARILY REFLECT THE OFFICIAL REVIEW OR POLICY OF THE FAA. ACCEPTANCE OF THESE DOCUMENTS BY THE FAA DOES NOT IN ANY WAY CONSTITUTE A COMMITMENT OF THE PART OF THE UNITED STATES TO PARTICIPATE IN ANY DEVELOPMENT PROJECTED HEREIN NOR DOES IT INDICATE THAT THE PROPOSED DEVELOPMENT IS ENVIRONMENTALLY ACCEPTABLE IN ACCORDANCE WITH THE APPROPRIATE PUBLIC LAWS

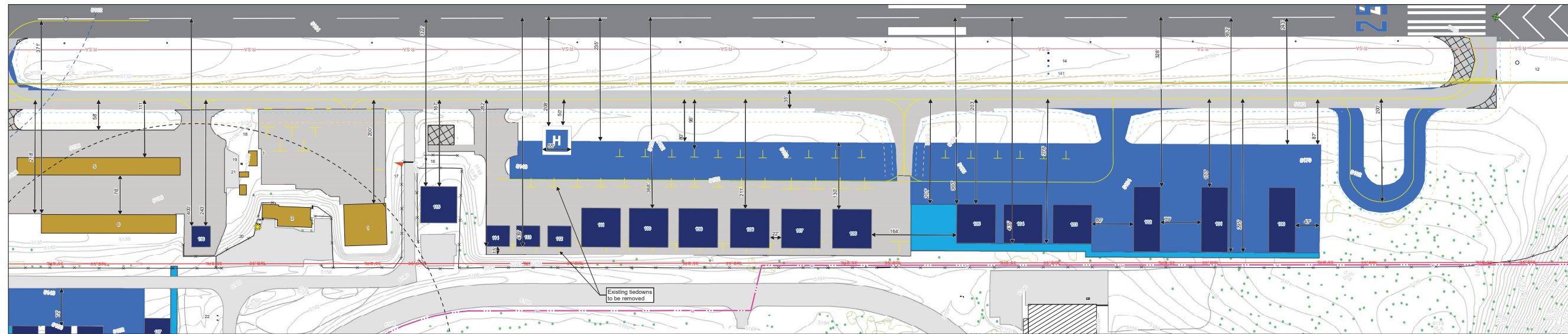




# West End



# East End

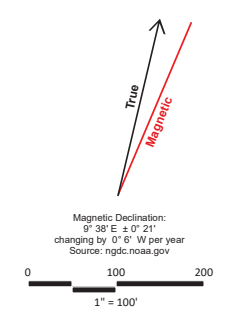


**Legend**

- Airport Property Boundary
- Runway End Point
- Airport Reference Point (ARP)
- Ground Contour
- Ultimate 35' Building Restriction Line (BRL)
- Dense Vegetation Area
- Vegetation Point
- Airport Beacon
- Runway Protection Zone (RPZ)
- Runway Safety Area (RSA)
- Runway Object Free Area (ROFA)
- Runway Obstacle Free Zone (ROFZ)
- Taxiway Object Free Area (TOFA)
- Taxiway Safety Area (TSA)
- Existing AWOS Critical Area
- Ultimate AWOS Critical Area
- Fence
- Existing Gate
- Ultimate Gate
- Existing/Ultimate Marking Line
- Existing PAPI-2
- Ultimate PAPI-4
- Existing Wind Sock
- AWOS-3
- REILS
- Ultimate Easement
- Existing On-Airport Structure
- Off-Airport Structure
- Existing Paved Road/Parking
- Existing Unpaved Road/Parking
- Existing Taxiway
- Existing Apron
- Existing Runway
- Ultimate Structure
- Ultimate Airfield Pavement
- Ultimate Paved Road/Parking
- Pavement to be Removed

EXISTING AIRPORT FACILITIES			
#	Facility Name	Top Elevation ft. msl	#
1	Executive Hangar	5,175.10	19
2	Crosswinds Restaurant	5,170.10	20
3	Airport Operations Office	5,154.70	21
4	Airport Operations	5,151.40	28
5	T-Hangar (10-unit)	5,153.00	29
6	Linear Box Hangar (4-unit)	5,159.30	30
7	Campground Facilities	5,155.90	31
8	Campground Facilities	5,164.40	32
9	T-Hangar (5-unit)	5,165.90	33
10	Fuel Farm	5,144.00	34
11	REILS	5,139.60	35
12	Windcone	5,154.95	36
13	PAPI-2	5,153.03	37
14	Airport Utility	5,175.10	38
15	Windcone	5,175.10	39
16	Airport Utility	5,154.70	

ULTIMATE AIRPORT FACILITIES			
#	Facility Name	Top Elevation ft. msl*	#
100	5-Unit T-Hangar	5187.1	122
101	5-Unit T-Hangar	5187.1	123
102	5-Unit T-Hangar	5187.1	124
103	75' x 75' Executive Box Hangar	5187.1	125
104	75' x 75' Executive Box Hangar	5187.1	126
105	75' x 75' Executive Box Hangar	5187.1	127
106	75' x 75' Executive Box Hangar	5175.1	128
107	75' x 75' Executive Box Hangar	5175.1	129
108	75' x 75' Executive Box Hangar	5175.1	130
109	75' x 75' Executive Box Hangar	5175.1	131
110	75' x 75' Executive Box Hangar	5175.1	132
111	75' x 75' Executive Box Hangar	5175.1	133
112	45' x 40' Executive Box Hangar	5175.1	134
113	45' x 40' Executive Box Hangar	5175.1	135
114	45' x 40' Executive Box Hangar	5175.1	136
115	Terminal Building	5175.1	137
116	SRE Facility	5175.1	138
117	50' x 50' Executive Box Hangar	5164.4	



**General Notes**  
1. Mapping data from Martinez Geospatial. Survey Date: 11/14/2022

**DRAFT**

No.	REVISIONS	DATE	BY	APPD


**Payson Airport**

**Terminal Area Drawing**

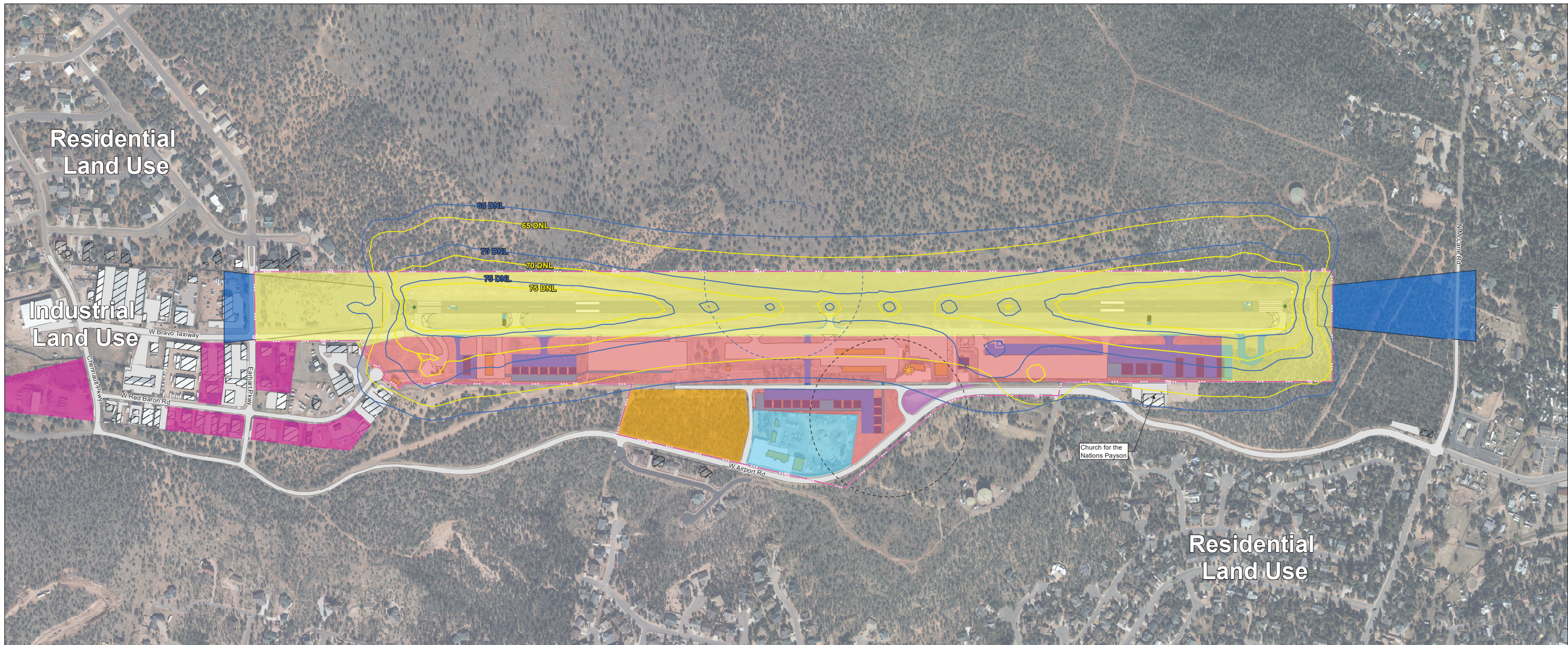
Payson, Arizona

PLANNED BY: Chandra Burks  
 DETAILED BY: Ethan Blackburn  
 APPROVED BY: Matt Quick

January 2024    SHEET 9 OF 11



PDF Created: Date: 1/16/2024, Time: 3:18:15 PM, Source Document Path: C:\Users\EthanBlackburn\Coffman Associates Inc\Coffman - sp\_GIS\SPAN\_2021\ALP\_Series\ESR\IMXD\10\_PAN\_LandUse.mxd



**Legend**

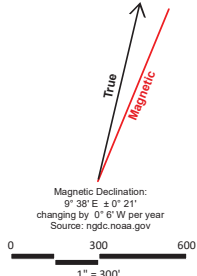
- Airport Property Boundary
- Runway End Point
- Existing On-Airport Structure
- Off-Airport Structure
- Airport Beacon
- Existing/Ultimate Marking Line
- REILs
- Existing PAPI-2
- Ultimate PAPI-4
- Runway Protection Zone (RPZ)
- Existing AWOS Critical Area
- Ultimate AWOS Critical Area
- Existing Paved Road/Parking
- Existing Taxiway
- Existing Apron
- Existing Runway
- Ultimate Structure
- Ultimate Airfield Pavement
- Ultimate Paved Road/Parking
- Pavement to be Removed

**Existing/Future Airport Land Use**

- Airfield Operations
- General Aviation Facilities
- Aeronautical Use Reserve
- Non-Aeronautical Use
- Open Space
- Existing Easement
- Ultimate Easement
- Existing 2022 Noise Contours (DNL)
- Future 2042 Noise Contours (DNL)

**General Notes**

- Horizontal Datum: NAD83 - Vertical Datum NAVD88
- Mapping data from Martinez Geospatial. Survey Date: 11/14/2022
- Noise contours generated using INM version 3e.
- Airport specific zoning height restrictions are established per the Town of Payson's Code of Ordinances, Section 154-02-015: Airport Overlay District, which limits the height of all construction, structures, buildings, and landscaping within the following zones: Utility runway visual approach, Utility runway non-precision instrument approach, Heliport approach, Heliport transitional, Horizontal and Conical zones (Ord. 466, Passed February 22, 1996).



**DRAFT**

No.	REVISIONS	DATE	BY	APPD

**Payson Airport**

**Airport Land Use Drawing**

**Payson, Arizona**

PLANNED BY: Chandra Burks  
 DETAILED BY: Ethan Blackburn  
 APPROVED BY: Matt Quick

January 2024      SHEET **10** OF **11**



PDF Created: Date: 1/16/2024 Time: 3:25:25 PM Source Document Path: C:\Users\EthanBlackburn\Goffman - sp GIS\PAN\_2021\ALP\_Sep\PAN\_ALP\_Series\ESR\IMXD\11\_PAN\_ExhibitA.mxd



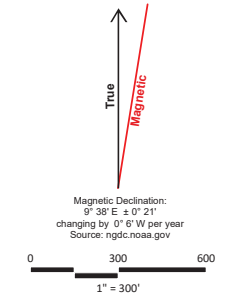
Owned Property														
Tract ID	Grantor	Grantee	Interest	Deed Acreage	GIS Acreage	Instrument	Book/Page	Easement	FAA Grant #	Date	Purpose Of Acquisition	APN	Released	Notes
1	US Forest Service	Town Of Payson	Fee Simple	94.67		Quit Claim Deed	Doc. 709783	N/A		6/30/1997	Airport Development	30239005	N/A	Had prior been used via a Special Use Permit
2	US Forest Service	Town Of Payson	Fee Simple	8.73		Quit Claim Deed	901/460-461	N/A		3/15/1993	Airport Development	30239001B	N/A	Covers previous easement from Docket 741/pg. 724
3	MPG, Inc.	Town Of Payson	Fee Simple			Tract A, Sky Park Industrial	Warranty Deed	2005-015887	N/A	8/17/2005	Airport Development	30277044	N/A	
4	Machin, Frank A.	Town Of Payson	Fee Simple			Lot 7, Sky Park Industrial	Warranty Deed	No Data	N/A	8/26/1999	Airport Development	30277007	N/A	Doc. 00112739-JLH

Property To Be Acquired		
Tract ID	Type	Acreage
101	Avigation Easement	1.89
102	Avigation Easement	7.46

Easements														
Tract ID	Grantor	Grantee	Interest	Deed Acreage	GIS Acreage	Instrument	Book/Page	Easement	FAA Grant #	Date	Purpose Of Acquisition	APN	Released	Notes
A					3.57			Avigation			Airspace Protection	30277033A		
						30277035A								
						30277037A								
						30277039A								
						30277040								
B					1.74			Avigation			Airspace Protection	30277041A		
						30277043								
						30277010								
						30277011								
						30277012								
C					1.66			Avigation			Airspace Protection	30277027		
						30277028								
						30277029								
						30277030								
						30277031								
D					1.29			Avigation			Airspace Protection	30277032		
						30277017B								
E					3.96			Avigation			Airspace Protection	30277017C		

**Legend**

- Airport Property Boundary
- Parcel Boundaries
- Existing Easement
- Ultimate Easement
- Runway Object Free Area (ROFA)
- Runway Obstacle Free Zone (ROFZ)
- Runway Protection Zone (RPZ)
- Runway Safety Area (RSA)



**General Notes**  
 1. Mapping data from Martinez Geospatial. Survey Date: 11/14/2022  
 2. Metes & Bounds auto-generated using GIS software.

No.	REVISIONS	DATE	BY	APPD

**DRAFT**

Payson Airport  
**Exhibit "A" Airport Property Inventory Map**  
 Payson, Arizona

PLANNED BY: Chandra Burks  
 DETAILED BY: Ethan Blackburn  
 APPROVED BY: Matt Quick

January 2024 SHEET 11 OF 11

THE PREPARATION OF THESE DOCUMENTS WAS FINANCED IN PART THROUGH A PLANNING GRANT FROM THE FEDERAL AVIATION ADMINISTRATION AS PROVIDED UNDER SECTION 503 OF THE AIRPORT AND AIRWAY IMPROVEMENT ACT OF 1982, AS AMENDED. THE CONTENTS DO NOT NECESSARILY REFLECT THE OFFICIAL VIEWS OR POLICY OF THE FAA. ACCEPTANCE OF THESE DOCUMENTS BY THE FAA DOES NOT IN ANY WAY CONSTITUTE A COMMITMENT OF THE PART OF THE UNITED STATES TO PARTICIPATE IN ANY DEVELOPMENT DESCRIBED HEREIN NOR DOES IT INDICATE THAT THE PROPOSED DEVELOPMENT IS ENVIRONMENTALLY ACCEPTABLE IN ACCORDANCE WITH THE APPROPRIATE PUBLIC LAWS